

FOUR CHARACTERISTIC WALTZES

Composed by

S. COLERIDGE-TAYLOR.

Op. 22.

VIOLA

FOUR CHARACTERISTIC WALTZES

Composed by

S. COLERIDGE-TAYLOR.

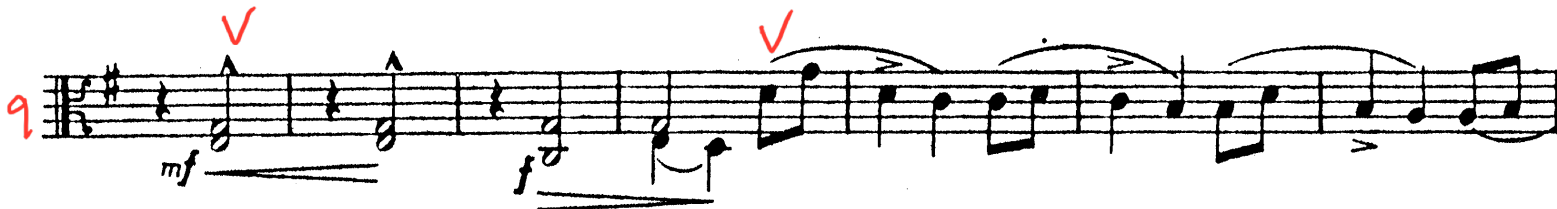
VIOLA.

Op. 22.

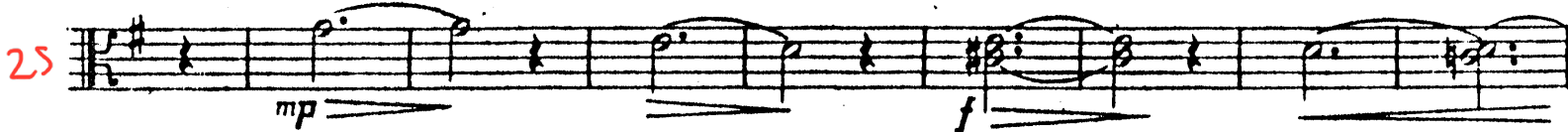
13 24

I.

Allegro ma non troppo.



Poco meno mosso.



poco rit.

*Tempo 1^o
plzz.*



VIOLA.

3

50

arco
cresc.
cresc.

57

ff

65

dim.
rall.
Poco meno mosso.
dolce

73

f
mp

81

f
poco rit.

89

Tempo I?
mp

97

mf
f

104

3
f
V accel.
sf
sf

II.

VIOLA.

Tempo di Valse.

9 *mp*

18 *f* *dim.* 1. *A* 2. *A* *pp*

25 *Con anima.* *f* *dim.* *rit.*

33 *Tempo 1º* *p* *poco rit.* *a tempo divisi* *sf*

41 *unis.* *cresc.* *f* *dim.* *pp*

49 *plizz.* *pp* *sf* *poco rit.* *a tempo*

57 *cresc.* *f* *arco* 2

67 *cresc.* *f*

76 *rit.* *ff* *a tempo*

87 *sf* *rall.*

96 *a tempo* *3* *plzz.* *poco rit.* *a tempo* *mp*

104 *f* *dim.* *arco* *pp*

116 *poco rit.* *a tempo* *sf*

124 *rall.* *a tempo* *mp*

133

142 *poco rit.* *a tempo* *f* *dim.*

152 *Con anima.* *rall.* *plzz.* *sf*

III.

VIOLA.

*Andante. Con sentimento.**mp*
con sordini*f**dim. p dim. pp**cresc.**dim. p**cresc.**rall.**a tempo**cresc.**ff**dim.**pp**f**rall.**poco**a**poco**rall.**Poco più moto.**p**pp**pp**p**pp**accel.**p cresc.**poco**a**poco**cresc.*

89 *rall.* *ff* *dim.* *p* *a tempo* 7

105 *f* *dim.* *p cresc.* *tranquillo* 4

118 *rall.* *dim.* *p* *Tempo I?*

127 *f* *dim.* *p* *dim.* *pp*

136 *cresc.* *dim.* *p* *cresc.*

146 *f* *dim.* *ff* *dim.* *rall.* *pp*

155 *f*

165 *pp* *mf* *pp* *mf* *morendo*

174 *pp* *pp* *dim.* *e* *rall.*

IV.

VIOLA.

Allegro furioso.

10 *ff* *rit.* *a tempo* *f*

17 *ff* *f*

24 *ff* *fff*

30 *fff*

37 *ff* *ff*

47 *rit.* *a tempo* *sf* *p* *pp* *sf* *p*

54 *plzz.* *arco* *plzz.* *sf* *pp*

62 arco pizz. arco pizz. dim.

69 rall. a tempo arco f f

77 V V n n v n n sempre ff

84 V V 3 f

93 V V rit. a tempo f

100 ff ff

107 f ff

115 n V V sff sff

121 3 V n V sempre ff accel. al fine. sff

Detailed description of the musical score: The score is for a Viola part, spanning measures 62 to 121. It is written on a single staff with a key signature of one sharp (F#). The tempo and dynamics are indicated by various markings. Red handwritten annotations are present throughout, including measure numbers (62, 69, 77, 84, 93, 100, 107, 115, 121), slurs, and other performance instructions. The score includes various musical notations such as notes, rests, and dynamic markings. The dynamics range from sf (sforzando) to sff (sforzissimo). The tempo markings include rall. (rallentando), a tempo, and rit. (ritardando). The score also includes a 3-measure rest and a 3-measure triplet. The final instruction is 'sempre ff accel. al fine.' (always fortissimo, accelerate to the end).